

*eSES software provides high reliability, high performance network connectivity for semiconductor manufacturing equipment.*

The External Symphony Equipment Server (eSES) is a network-optimized software module that provides all the services you need to easily integrate equipment into applications that use intranets and extranets. eSES software enables concurrent access and sharing of equipment data via an object interface—much like the way printer servers provide access to multiple applications in the office environment. eSES software enables rapid deployment of fab-wide automation projects and provides an immediate e-Diagnostics solution for tool manufacturers. In addition, eSES software supports SECS pass-through, and you can place it inline as a retrofit for existing factory automation systems. eSES software is available as an add-on module for semiconductor equipment with SECS communications interfaces, sensors, and other subsystems.

Symphony's eSES software greatly reduces the amount of SECS/GEM knowledge you need to develop equipment applications such as automatic process data collection, advanced process control (APC), manufacturing execution systems (MES), and others. Application developers can use off-the-shelf rapid application development tools to create and integrate a variety of equipment applications.

The Symphony equipment server software solution enables equipment to become a shared resource on your network, allowing you to run multiple applications to concurrently access your equipment in real time. Your network can be configured as an internal LAN, an extranet, or over the Internet. The server resides at the equipment supervisory control level and manages

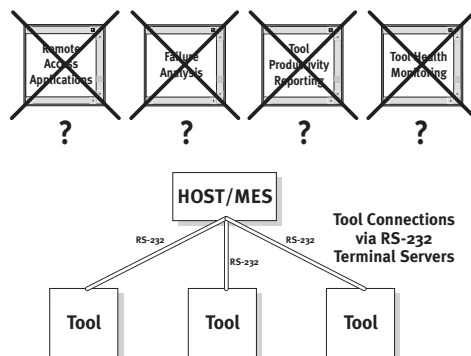
### BENEFITS

- Makes equipment an easy-to-use, sharable resource for multiple applications and users
- Provides remote access to equipment and sensors for monitoring and control
- Dramatically reduces the time required to deploy application software on different types of process equipment
- Enables easy and rapid retrofits of existing factory automation systems
- Supports SEMATECH's e-Diagnostics initiative
- Facilitates collaboration between tool manufacturers and fabs for more efficient tool maintenance and troubleshooting

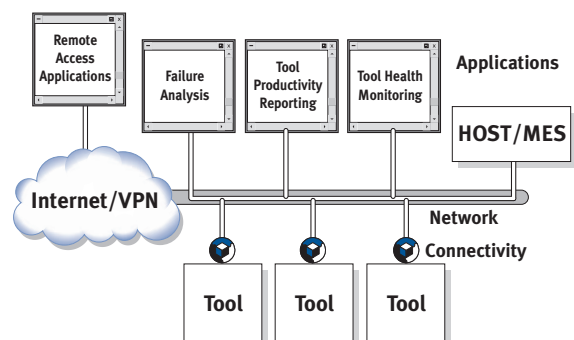
### FEATURES

- Advanced web-based administration services and logging
- Automated equipment/host connection management
- Pass-through SECS communications
- SECS/HSMS conversion
- Built-in protocol decoding and interpretation
- Event and alarm support
- Multi-user management for access control and arbitration
- Connection to SECS/HSMS tools, sensors, and other equipment using standard drivers

the communication between client applications and the equipment. Multiple applications can concurrently access the tool and share equipment data. An Equipment Definition File (EDF) system provides an easy way to quickly and automatically compile drivers for different process equipment. The applications access equipment data through an object interface such as an ActiveX® Control, a Java® interface, and other protocols or interfaces, as required by the application.



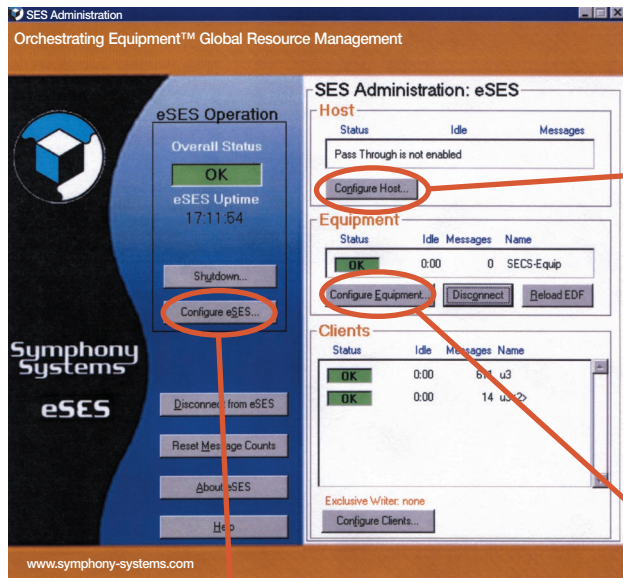
The fab *before* eSES software is installed



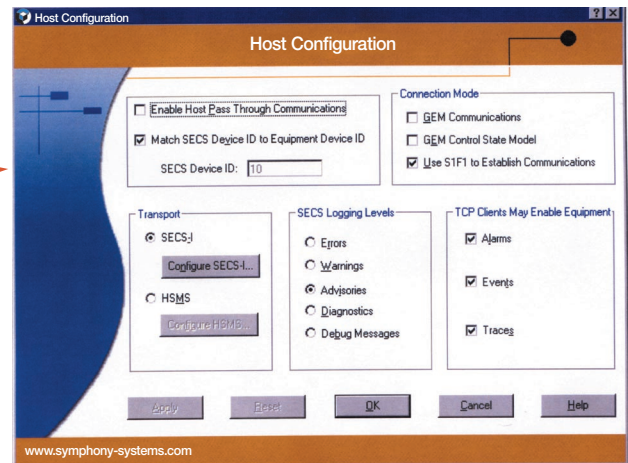
The fab *after* eSES software is installed

**eSES software provides secure, reliable, and robust equipment connectivity for many semiconductor applications.**

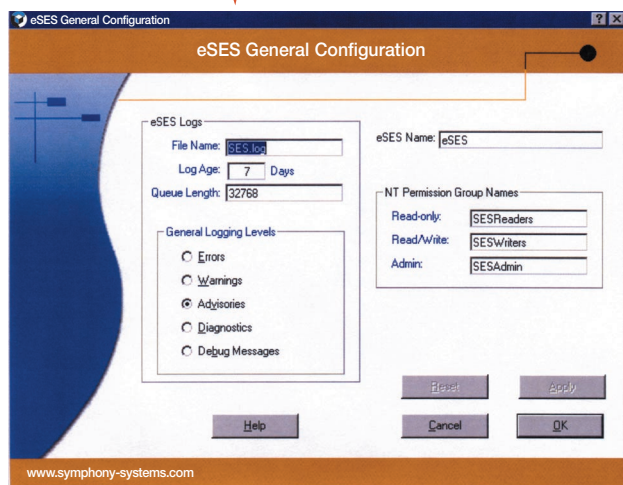
## SPECIFICATIONS



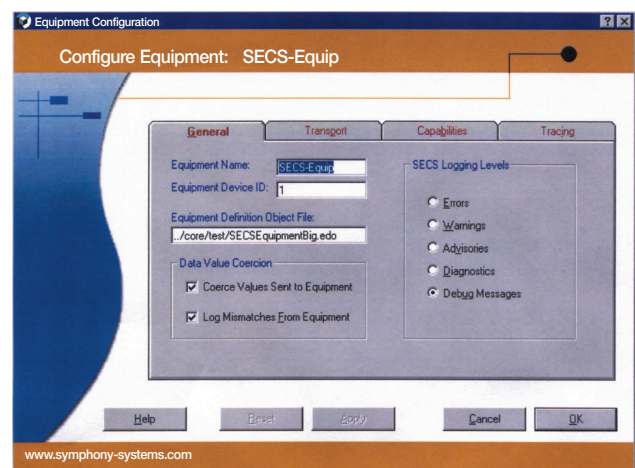
eSES software main panel shows the overall system status.



Configurable host parameters ensure uninterrupted operation of the MES system after eSES software installation.



Configure eSES software security and logging levels.



Select your equipment and its communication parameters.

Distributed by



Advanced Energy Industries, Inc.

1625 Sharp Point Drive  
Fort Collins, Colorado 80525  
800.446.9167  
970.221.4670  
970.221.5583 (fax)

support@aei.com

www.advanced-energy.com

© Advanced Energy Industries, Inc. and Symphony Systems 2001

All rights reserved. Printed in U.S.A.

SL-ESES-250-01 1.5M 03/01

Developed by



Symphony Systems

635 Campbell Technology Parkway  
Campbell, California 95008  
408.558.9100  
408.558.9150 (fax)  
info@symphony-systems.com  
www.symphony-systems.com

eSES is a trademark of Symphony Systems. ActiveX and Java are trademarks of Microsoft and Sun Microsystems, respectively.

California

T: 408.263.8784  
F: 408.263.8992

New Jersey

T: 856.627.6100  
F: 856.627.6159

United Kingdom

T: 44.1869.320022  
F: 44.1869.325004

Germany

T: 49.711.779270  
F: 49.711.7778700

Korea

T: 82.31.705.2100  
F: 82.31.705.2766

Japan

T: 81.3.32351511  
F: 81.3.32353580

Taiwan

T: 886.2.82215599  
F: 886.2.82215050

China

T: 86.755.3867986  
F: 86.755.3867984